



protek

NEW
PRODUCTS
INSIDE!

SPORTS & ORTHOPAEDIC
CATALOGUE 2020

INCLUDES: GEL FOOTCARE RANGE



Tel: 01622 235001

sales@protek-supports.com



WWW.PROTEK-SUPPORTS.COM



The **protek®** brand was founded in **2016** with the aim of providing high quality, competitive sports and orthopaedic supports and other products to the pharmacy industry.

The current range consists of a comprehensive selection of elasticated and neoprene products suitable for work, sports and everyday use and is supported by several retail display and marketing options.

Following on from the success of our core offering, we are delighted to be adding several new lines in **2020** alongside the **Gel Footcare** range which is available to order now (page 13). Our fully **Reusable Hot & Cold Pack** with adjustable fitting pouch (page 12) is launching later this year and will be available in a 6pcs counter/shelf display or as individual units.

For further details, advice and enquiries please contact **sales@protek-supports.com** or call **01622 235001**.



CONTENTS

4. Elasticated Supports

6. Wrist Splint

7. Counter Displays

8. Neoprene Supports

11. Back Supports

12. Orthopaedic

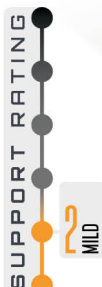
12. Hot & Cold Therapy

13. Footcare

14. About Supports



ELASTICATED SUPPORTS



- All-day comfort
- Minor sprains, strains & arthritis
- For weak or injured muscles & joints
- Support & compression for pain & swelling
- Can help with the prevention of further injury

52% Nylon, 35% Spandex, 13% Latex

Always seek medical advice for severe or persistent injuries.

Elasticated Knee Support



SIZE	REFERENCE	MEASUREMENTS
S	20205	30-35cm
M	20212	35-41cm
L	20229	41-48cm
XL	20236	48-56cm

(Measure around centre of knee cap)



SIZE	REFERENCE	MEASUREMENTS
S	20700	30-35cm
M	20717	35-41cm
L	20724	41-48cm
XL	20731	48-56cm

(Measure around centre of knee cap)

Elasticated Xtended Knee & Calf Support

Elasticated Ankle Support

SIZE	REFERENCE	MEASUREMENTS
S	20106	20-24cm
M	20113	24-28cm
L	20120	28-32cm
XL	20137	32-36cm

(Measure around large ankle bone)



Elasticated Elbow Support

protek

5

SIZE	REFERENCE	MEASUREMENTS
S	20304	23-28cm
M	20311	28-34cm
L	20328	34-40cm
XL	20335	40-46cm

(Measure around centre of elbow bone)



Elasticated Wrist Support



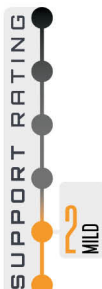
SIZE	REFERENCE	MEASUREMENTS
S	20007	15-18cm
M	20014	18-21cm
L	20021	21-24cm
XL	20038	24-28cm

(Measure around largest wrist bone)



Elasticated Hand Support

6



SIZE	REFERENCE	MEASUREMENTS
S	20403	13-16cm
M	20410	16-20cm
L	20427	20-24cm
XL	20434	24-28cm

(Measure around wrist at the largest point)

52% Nylon, 35% Spandex, 13% Latex

Breathable Wrist Splint



2X
SPLINTS



ADD BAR
FOR IMMOBILISATION

- Fits left or right hand
- Repetitive strain injury
- Carpal tunnel syndrome
- Reversible metal splint and bar
- For weakened & post-cast wrists
- Hook and loop fastening

SIZE	REFERENCE	MEASUREMENTS
UNI	20083	1 size fits most

25% Steel, 20% Aluminium, 20% Cotton,
20% Nylon, 10% Rubber, 5% Lycra.

Always seek medical advice for severe or persistent injuries.

Elasticated Counter Display Unit



30
PIECES

contains:
1 small, 2 medium,
2 large & 1 extra
large of each
product.

	KNEE	ANKLE	ELBOW	WRIST	HAND
S	20205	20106	20304	20007	20403
M	20212	20113	20311	20014	20410
L	20229	20120	20328	20021	20427
XL	20236	20137	20335	20038	20434

Neoprene Counter Display Unit



30
PIECES

contains:
1 small, 2 medium,
2 large & 1 extra
large of each
product & 12
universal size wrist
supports.

	OPEN PATELLA KNEE	ANKLE	ELBOW	WRIST
S	21547	21301	21400	UNI 21004
M	21554	21318	21417	
L	21561	21325	21424	
XL	21578	21332	21431	

NEOPRENE SUPPORTS



- All-day comfort
- Sprains, strains & arthritis
- For weak or injured muscles & joints
- Support & compression for pain & swelling
- Can help with the prevention of further injury

90% Neoprene Rubber, 10% Nylon

Always seek medical advice for severe or persistent injuries.

Neoprene Knee Support



SIZE	REFERENCE	MEASUREMENTS
S	21509	30-34cm
M	21516	34-38cm
L	21523	38-43cm
XL	21530	43-48cm

(Measure around centre of knee cap)

SIZE	REFERENCE	MEASUREMENTS
S	21547	30-34cm
M	21554	34-38cm
L	21561	38-43cm
XL	21578	43-48cm

(Measure around centre of knee cap)



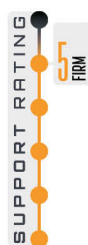
Neoprene
Open Patella Knee Support

Neoprene Hinged Knee Support



SIZE	REFERENCE	MEASUREMENTS
S	21707	30-34cm
M	21714	34-38cm
L	21721	38-43cm
XL	21738	43-48cm

(Measure around centre of knee cap)



2X
HINGE
REINFORCEMENT



Neoprene Knee Stabiliser



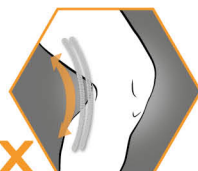
protek

9

- Knee cap stabilisation & alignment



4X
STABILISERS



SIZE	REFERENCE	MEASUREMENTS
S	21806	30-34cm
M	21813	34-38cm
L	21820	38-43cm
XL	21837	43-48cm

(Measure around centre of knee cap)

Neoprene One Size Knee Support



SIZE	REFERENCE	MEASUREMENTS
UNI	22353	1 size fits most



Neoprene Ankle Support



- Open heel

SIZE	REFERENCE	MEASUREMENTS
S	21301	19-22cm
M	21318	22-25cm
L	21325	25-28cm
XL	21332	28-31cm

(Measure around large ankle bone)



NEOPRENE

Neoprene
Elbow Support

SIZE	REFERENCE	MEASUREMENTS
S	21400	24-28cm
M	21417	28-32cm
L	21424	32-36cm
XL	21431	36-40cm

(Measure around centre of elbow bone)

Neoprene
Wrist Support
RSI
REPETITIVE
STRAIN INJURY


SIZE	REFERENCE	MEASUREMENTS
UNI	21004	1 size fits most

Neoprene Tennis
Elbow Support
NEW


- Epicondylitis
- Repetitive strain injury
- Integrated GEL pad

SIZE	REFERENCE	MEASUREMENTS
UNI	21127	1 size fits most

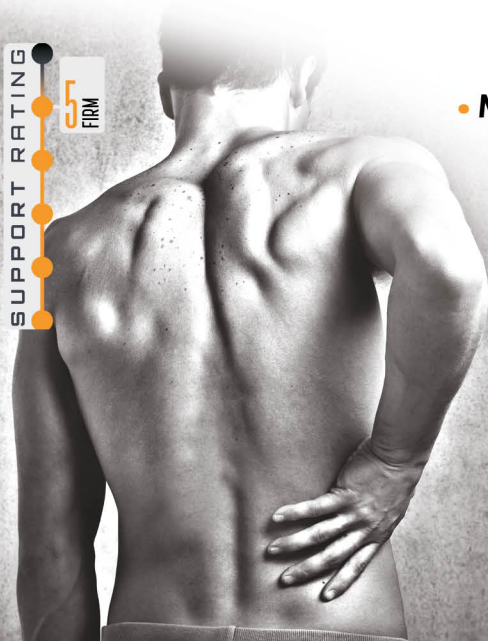


SIZE	REFERENCE	MEASUREMENTS
UNI	21103	1 size fits most

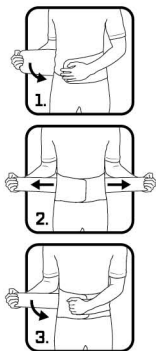

RSI
REPETITIVE
STRAIN INJURY

NEW
REVERSIBLE
FITS LEFT OR RIGHT
Neoprene
Thumb Brace

SUPPORT RATING
5 FIRM



- Support for a weak or injured back
- Minor back pain & abdominal sprains
- Can help to prevent further injury
- Adjustable hook & loop fitting



8X
STAYS

SIZE	REFERENCE	MEASUREMENTS
M	20502	80-100cm (32-40")
L	20519	100-120cm (40-47")
XL	20526	120-140cm (47-55")

(Measure around waist)

Elasticated
Back Support
with Stays



6X
STAYS

SIZE	REFERENCE	MEASUREMENTS
M	21905	65-100cm (26-40")
L	21912	100-120cm (40-47")
XL	21929	120-140cm (47-55")

(Measure around waist)



Neoprene Back
Support with Stays

ORTHOPAEDIC

Soft Foam Neck Collar



NEW



UNISEX

- Helps to support a weak or injured neck
- Helps to immobilise neck & aid healing
- Adjustable fit

S	20946
M	20953
L	20960

Pouch Arm Sling



Junior

ADULT	20908
JNR	20915

NEW



- Supports & elevates an injured arm
- Stabilisation for post cast or post surgery arm
- Adjustable fit

HOT & COLD THERAPY



COMING SOON!

Reusable Hot & Cold Pack with Fitting Pouch

22605

- **HEAT** for aching muscles & stiffness
- **COLD** for pain relief & swelling





GEL TOE SPREADERS
23107



GEL TOE SEPARATORS
23114



GEL BUNION CUSHIONS
23121



GEL TOE CAPS
23138



**CORN WRAPS
(FABRIC/GEL)**
23145



**TOE CAPS
(FABRIC/GEL)**
23152



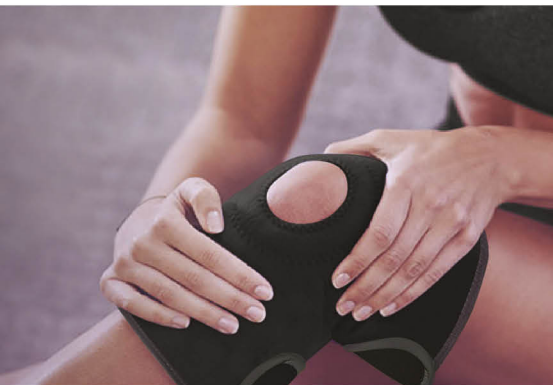
**GEL ARCH CUSHIONS
WITH ELASTICATED
FOOT BANDS**
23206



**GEL BUNION GUARDS
WITH ELASTICATED
FOOT BANDS**
23244



ABOUT SUPPORTS



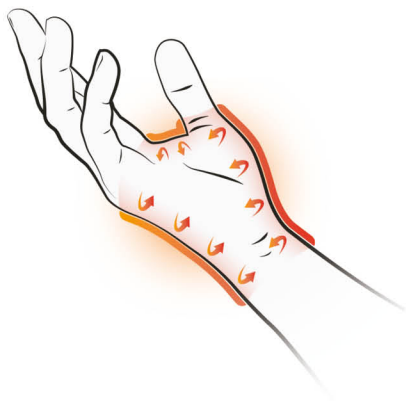
Support

An orthopaedic support applied to an injured muscle or joint can help to provide structural reinforcement and reduce aggravation of the damaged area. The reduction of stress and movement can aid the healing process and lessen or prevent further injury.



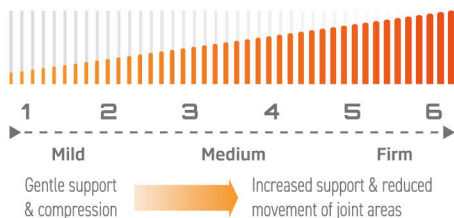
Compression

Compression of the injured joint or muscle area can help to reduce swelling and prevent the painful accumulation of fluid. An orthopaedic support can help swelling and pain to subside more quickly.



Warmth

The therapeutic warmth provided by wearing a neoprene support can help to promote circulation and oxygen flow to damaged soft tissue and aid the healing process.



Protek Supports are rated on a scale of 1 to 6 determined by the level of support and compression they can provide. Minor sprains and strains can usually be treated with gentle support and compression.

For acute injuries a more substantial support may be required. Always seek medical advice for severe or persistent injuries.

Using orthopaedic supports as part of **RICE** treatment for minor sprains



REST - avoid exercise and reduce your daily physical activity.



ICE - apply an ice pack to the affected area for 15-20 minutes every two to three hours. A bag of frozen peas, or similar, will work well. Wrap

the ice pack in a towel so that it doesn't directly touch your skin and cause a cold burn. Do not leave the ice pack on while you are asleep.



COMPRESSION - use an elasticated or neoprene support, or supportive bandages during the day to limit swelling. Always ensure that bandages

or supports are not too tight and do not restrict blood flow.



ELEVATION - using a pillow to support it, keep the injured body part raised above the level of your heart whenever possible. This may also help reduce swelling.





Protek® supports are
designed & manufactured by
Lightwing Marketing Ltd

Unit 4, Bredhurst Business Park
Westfield Sole Road
Boxley, Kent, ME14 3EH, UK

www.lightwing-marketing.com

Tel: 01622 235001

sales@protek-supports.com

Protek® is a registered trademark



2020V1 11/19

WWW.PROTEK-SUPPORTS.COM